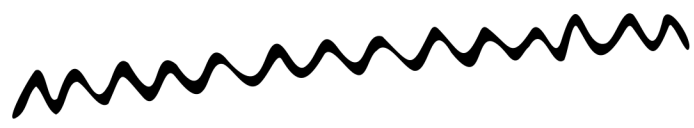
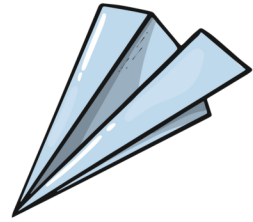
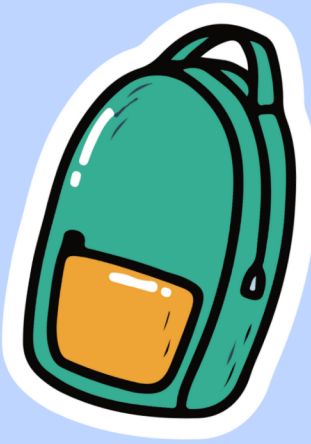


BACK TO SCHOOL



Sully Christian

2023-2024



HEAD TEACHER

Angela Veenstra

Email: aveentstra@sullychristian.org

Cell: 641-780-1133

OFFICE

Bethany Tanke | Secretary

Email: Secretary@sullychristian.org

Office Phone: 641-594-4180 ext: 100

Cell: 641-990-6827

Welcome!

We are excited to kick off the start
of the 2023-2024 school year!

School Hours

8:30 am - 3:25 pm

Bus Riders

Bus drivers will be in contact with you about your bus routes and pick-up times as school approaches. Please let the office know if you have any questions about busing.

Non-Bus Riders

Morning Drop-off

Parent Drop-Off for non-bus riders may use the drop-off lane **after** the school bus drop-off at 8:25 am. The School bell rings at 8:30 am for the start of class. If you need to drop off a few minutes early, you may park & walk your student to the door (to not block the bus lane), and your students may wait in the entryway for the first bell to ring.

Afternoon Pick-up

Parent pick-up for non-bus riders may use the drop-off/pick-up lane **following behind** the school bus. The school bell rings at 3:25 pm, bus students will be released to load the bus & depart. You may pull through the lane behind the bus and students will be released as you pull forward and the next car departs.

Student Attendance/Ride Changes

Please Call, Text, or Email the School Office (& Bus Driver) for changes to students daily schedule

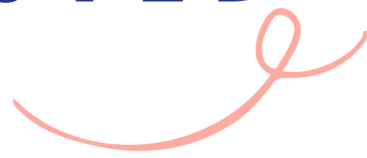
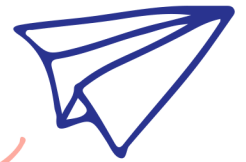
If you have any late arrivals or early releases (for appts. etc...) or have a change to who is picking up your child from school, please call, text, or email the office. From the office, we will let the teachers know. Please additionally text your bus driver (if applicable) to note a AM or PM bus change.

You may text Bethany in the office and the child's teacher (+ Bus Driver) on same text; just note to please always include the office as teachers may not see messages depending on their schedule before students are released out the door.



STAY CONNECTED

WWW.SULLYCHRISTIAN.ORG



SUBSCRIBE TO OUR WEEKLY NEWSLETTER!



Bits n' Pieces
WEEKLY NEWSLETTER

Stay up to date with school news, information & more with our Bits n' Pieces Newsletter emailed out each Wednesday.

Scan QR code to subscribe or view past Bits n' Pieces



TEXT ALERTS !! ADD 📞 # 844-962-0611 & SAVE CONTACT - SCS ALERTS

We utilize JMC for our mass notification messaging system. You can update your email & phone information by logging into the JMC portal.

All text alert/reminder notifications will come from this phone number. We will use this to send notifications for early outs, no school, and winter weather delays/closings.

If you accidentally unsubscribed to the text alerts, let the office know



SAVE TIME AND IMPORT EVENTS FROM OUR DIGITAL CALENDAR

Subscribe online & sync all early outs & school events to your phone's preferred calendar.

sullychristian.org | Events tab (scroll below cal.)



DIGITAL BACKPACK AKA: The Parent Hub

If you are looking for a quick link or general information... try checking the digital backpack. Have an Idea of something you would like to see there, let the office know!



STUDENT INFORMATION PORTAL

Check Grades, Pay Lunch Money, and more!



Tuition

Invoices will be emailed on August 1st.

- You may write one check made out to Sully Christian School, but please include the designated amount to be applied to Tuition, Bus, or Lunch with the check.
- Payments may be mailed to the school or dropped off on Back to School Night.
- Payments are due by the first day of school, August 23rd.



ESA

Tuition Secretary

Sharon Fopma

Finance@sullychristian.org

Assign SCS as your student's school, and we will submit your invoice on the Odyssey portal.

- ESA payments are made in semester installments (August & January)

Additional Tuition Credit will be applied to the invoice when received.

- LOG-STO, TRIP, church support, etc..

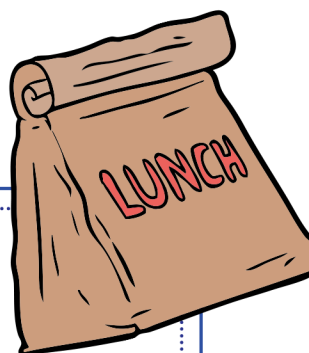
Lunch

Lunch Prices

- Lunch w/ Milk: \$2.95
- Extra Entree: \$1.10
- Extra Side: \$0.55
- Extra Milk/Milk only: \$0.45

Low Balance Notification

You will receive an auto-email notification when your student(s) lunch account is 5 days from running out.



Send a check with student or add money to your child's lunch account online through the **JMC App**. You can find instructions in the Digital Backpack on the website.

Sully Christian School Supply List

2023-2024

Transitional Kindergarten & Kindergarten

- 24 regular Crayons (classic colors)
- 1 box of 12 erasable colored pencils
- 3 or 4 fine-point dry erase markers
- 3 small glue sticks
- Scissors
- 1 large eraser (white if possible)
- 1 sturdy pencil bag/box
- 1 plastic crayon box (preferable w/ latches)
- 4 paper folders with pocket (not plastic)
- 1 wide ruled paper notebook
- 1 box snack size zipper bags
- 3 box kleenex
- 1 blanket (rest time)
- Sketch book: 11 X 18" or 9 X 12" (K only)

1st & 2nd Grade

- Large box colored pencils (at least 24)
- 2 boxes of 8 classic color broad-tip washable markers
- 3 or 4 fine-point dry erase markers
- 1 box fine-tip washable markers
- 1 pack of highlighters
- 3 glue sticks
- 2 white erasers
- Scissors
- 1 - 3 ring binder (1 in.)
- 4 paper pocket folders
- 2 single subject notebooks
- Ruler
- Inexpensive headphones
- 3 box kleenex
- 1 sock or white board eraser

ART

(only for NEW enrolling K-8 students)

- Sketch Book : 11 X 8" or 9 X 12"



Current SCS students have sketchbooks kept in Art Room from prior year

3rd & 4th Grade

- 1 box washable markers
 - 1 large box colored pencils
 - 2 glue sticks
 - 2 large erasers
 - Scissors
 - 2 single subject notebooks
 - 2 paper pocket folder
 - 1 3-ring binder (1 in.)
 - 8 fine-point dry erase markers
 - Pencil Box/Bag
 - Inexpensive headphones
 - 3 box kleenex
 - 1 container Clorox wipes or spray
- Optional: donations of new or used "prizes" for classroom store

5th - 8th Grade

- 1 large box colored pencils
- 4 black fine-point dry erase markers
- 1 box washable markers
- 1 pack Blue or Black Pens
- 2 Red Pens
- 1 pkg note cards
- 2 large erasers
- 4 pocket folders
- 1 pkg loose leaf paper
- 1- ½" binder (5th grade only or if new JH student)
- 3 - 1" binders
 - (Science, Bible, Social Studies)
- Scissors
- Calculator (5th & 6th)
- Scientific calculator (7th & 8th)
- 12" Ruler (with inches & centimeters)
- Compass Protractor
- Headphones or earbuds compatible with Chromebooks
- 3 box Kleenex



The school had lots of yellow #2 pencils donated to us - you do not need to purchase pencils if you choose! We will have them available back to school night on August 21st
***Please label each classroom item with students initials**

Things to know

Snack Policy

Students may bring snacks to school to eat during morning or afternoon recess!

JH Kiddos

no snacks in class unless permission given by teacher

School Theme

Made to Glorify from Generation to Generation

Verse: Psalm 78:4b ESV
Song: Always | Chris Tomlin

1st Day of School Chapel

Parents are welcome to join us at 8:35 am in the school gym for a 1st day a school chapel.

TK & Kindergarten students will be introduced with a fun Q&A.

Water Bottles

Students may bring a water bottle (for water) to school to use throughout the day.

We ask that all other drinks are finished outside of school as soda & smoothies make for sticky clean-up.

*other drink options are ok with permission on special occasions/birthdays by teacher



UPCOMING FUNDRAISER EVENTS



 2023-2024 School Year

HOSTESS SUPPER

AUGUST 26TH 2023

DUTCH LETTERS

NOVEMBER 3TH 2023

FOOD & FUN NIGHT

JANUARY 27TH 2024

GOLF

2024 TBD



Parent Fundraiser Committees

DUTCH LETTERS

NOVEMBER 3, 2023

MIXING DAY

10/31/23

SANDY DE VRIES
MELANIE VAN MANEN
STEPHANIE DYKEMA

ROLLING AM

SARAH CHRISTENSEN
CAROL JANSEN
SHELLY RANKIN

ROLLING PM

ANGIE VER PLOEG
HILLARY ENGBERS

FOOD & FUN NIGHT

JANUARY 27, 2024

AUCTION

HEATHER ZYLSTRA
AMY VAN WEELDEN
BETHANY TANKE

FOOD

CANDICE VOS
AMY VAN MAANEN
JESSICA
CUNNINGHAM

GAMES

KALLIE VAN ZEE
JERRI NIKKEL
MICHELL VAN
KOOTEN

GOLF

JUNE 2024 (DATE TBD)

STEERING

ADVANCEMENT GROUP
BETHANY TANKE

IF YOU CAN NOT MAKE YOUR COMMITTEE/FUNDRAISER DUE TO OTHER CIRCUMSTANCES PLEASE TRADE WITH ANOTHER FAMILY OR FIND A SOCIETY MEMBER TO FILL IN FOR YOU. THANK YOU!!!